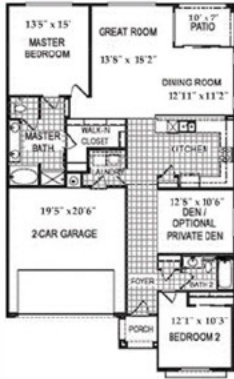


## The Monroe



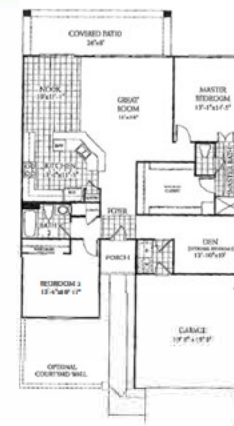
1584 Square Feet  
2 Bedrooms  
2 Baths  
Den/ Optional Bedroom

## The Franklin



1768 Square Feet  
3 Bedrooms  
2 Baths

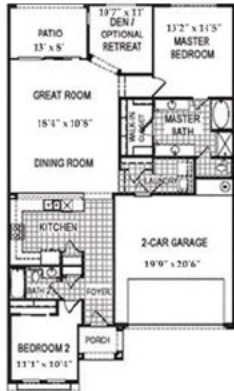
## The Whitney



1596 Square Feet  
2 Bedrooms  
2 Baths  
Den/ Optional Bedroom

## The Jefferson

1520 Square Feet  
2 Bedrooms  
2 Baths  
Den/ Optional Bedroom



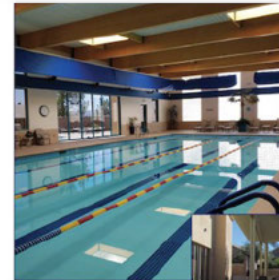
## The Fremont

1425 Square Feet  
3 Bedrooms  
2 Baths

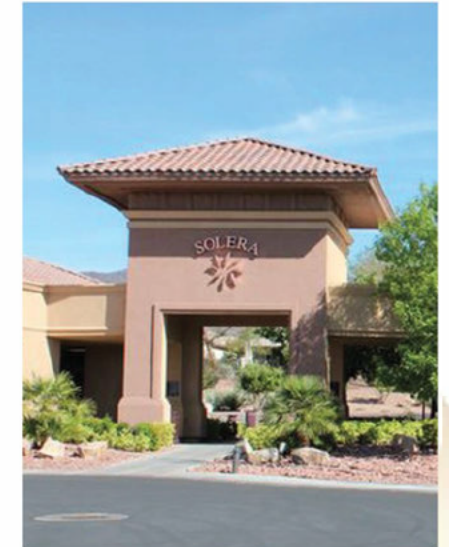


### Clubhouse Indoor Pool

Solera's indoor pool is approximately 75' x 35' and features an outdoor spa



Clubhouse Spa



## Solera At Anthem Community Map

## The Clark

1248 Square Feet  
3 Bedrooms  
2 Baths



## The Lewis

1142 Square Feet  
2 Bedrooms  
2 Baths



[www.soleranews.com](http://www.soleranews.com)



Community Center Hours:  
Mon- Sat 6am-8pm  
Sunday 6am-7pm



Solera At Anthem Community Association  
2401 Somerworth Drive  
Henderson, NV 89044  
702.207.1407

# Helpful Numbers

**Henderson Water & Sewer District**

702.267.5900

**Southwest Gas**

877.860.6020

**NV Energy**

702.402.5555

**Cox Communications**

702.968.0616

**US Post Office**

800.275.8777

**Henderson Municipal Court**

702.267.3300

**Dignity Health St Rose Hospital**

702.616.5000

**Social Security Office**

800.772.1213

**Department of Veterans Affairs**

702.791.9024

**Henderson Animal Control**

702.267.4970

**South Valley Animal Hospital**

702.451.5111

**Henderson Parks & Recreation Center**

702.267.4000

**Henderson Library**

702.707.2665

**Henderson Police**

702.267.5000

[www.soleranews.com](http://www.soleranews.com)



Community Center Hours:  
Mon- Sat 6am-8pm  
Sunday 6am-7pm

